



TOURISM

Facts and Figures

2005

1.GENERAL DATA ON THE REPUBLIC OF CROATIA

GENERAT DANA ON THE REPUBLIC OF CROATIA

TOTAL AREA	87,661 km ²
Land area	56,594 km ²
Coastal area	31,067 km ²
Population	4.44 mln
Capital	Zagreb (0.8 mln. inhabitants)
Coastline length	5,835.3 km
- Coastline length of mainland	1,777.3 km
- Coastline length of islands	4,058 km
Number of islands	1.185 (47 inhabited)
Rocks	389
Reefs	78
Traffic network length	28,344 km

WORLD HERITAGE PROTECTED BY UNESCO

CITY OF DUBROVNIK	DIOCLETIAN'S PALACE IN SPLIT	NATIONAL PARK PLITVICE LAKES
OLD CITY OF TROGIR	EUPHRASIUS BASILICA IN POREČ	ST. JACOB'S CATHEDRAL IN ŠIBENIK

VALUES OF THE MAIN METEOROLOGICAL PHENOMENA IN 2004 ¹⁾

CITY	Average annual valeus		Annual values		
	Air temperature °C	Air pressure, hPa	Precipitation, mm	Clear days	Cloudy days
Dubrovnik	16,9	1008,7	1317,1	132	72
Hvar	16,9	1012,3	801,6	102	80
Makarska	17,2	1008,7	1224,5	121	79
Mali Lošinj	15,6	1009,3	1071,8	56	69
Pula	14,6	-	882,1	55	113
Rijeka	14,3	1001,2	1577,1	58	124
Split	16,5	999,9	990,8	90	90
Šibenik	15,5	1006,1	946,7	104	74
Zadar	15,4	1014,7	800,4	85	68

¹⁾ Provisional data

AVERAGE ANNUAL MONTHLY AIR TEMPERATURES IN 2004 ¹⁾

°C

CITY	JANUARY	FEBRUARY	MARCH	APRIL	MAY	JUNE	JULY	AUGUST	SEPTEMBER	OCTOBER	NOVOMBER	DECEMBER
DUBROVNIK	8,1	9,8	11,4	15,3	17,0	22,8	25,9	24,9	21,7	19,7	13,7	12,1
HVAR	7,8	9,4	10,7	14,8	17,4	22,5	26,3	25,1	22,4	19,9	14,0	11,9
MAKARSKA	8,1	9,6	11,2	15,4	17,8	22,8	26,8	25,7	22,8	19,9	13,8	12,0
MALI LOŠINJ	6,7	7,4	9,3	13,3	16,6	21,6	25,0	24,8	20,8	18,2	12,9	10,1
PULA	4,6	5,5	8,1	12,7	16,0	21,6	24,9	24,9	20,5	17,3	11,0	8,3
RIJEKA	4,5	5,8	8,3	12,9	15,7	21,3	24,2	23,7	19,5	16,1	10,9	8,1
SPLIT	6,4	8,5	10,3	14,7	17,4	23,2	26,9	25,6	22,1	19,2	12,8	10,9
ŠIBENIK	5,4	7,3	9,3	13,8	16,7	21,8	25,6	24,7	21,3	18,5	12,1	9,5
ZADAR	6,0	7,6	9,1	13,7	16,6	21,6	24,8	24,4	10,7	18,2	12,2	9,7

¹⁾ Provisional data

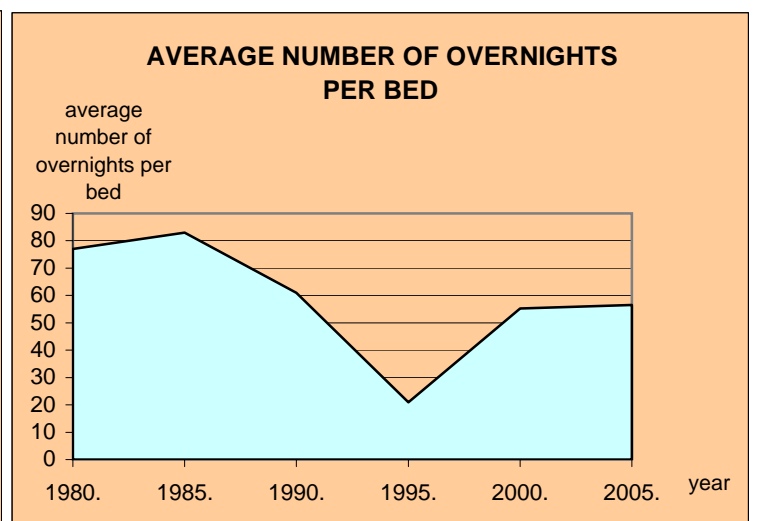
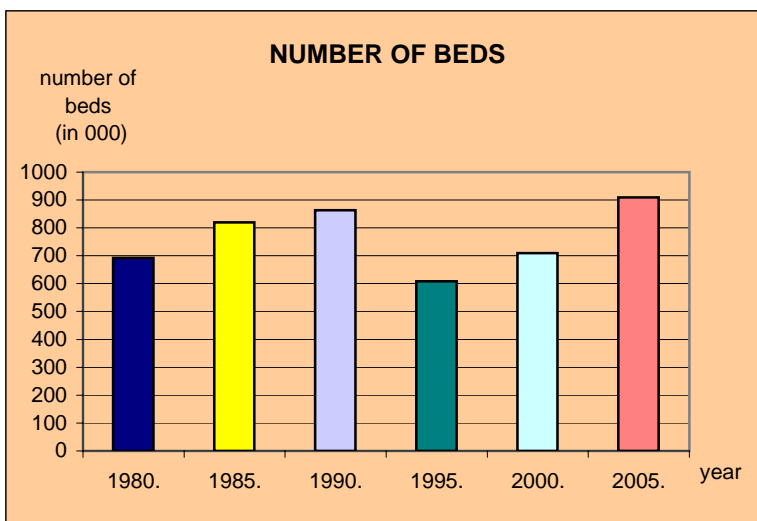
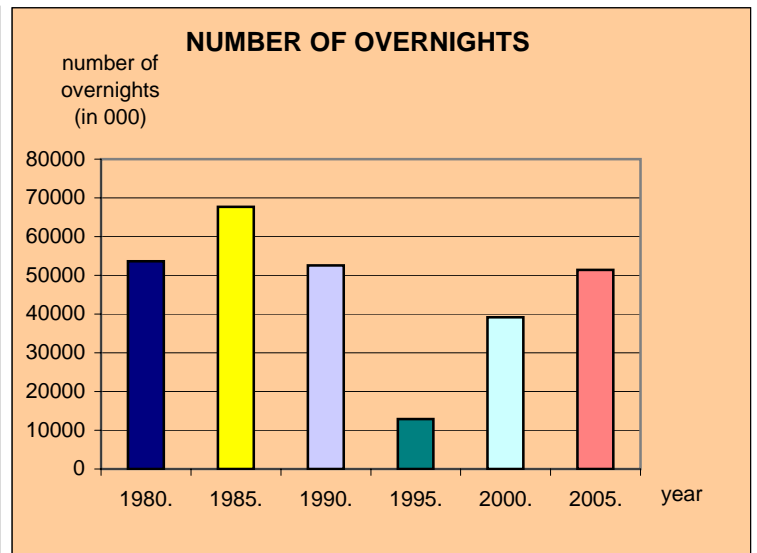
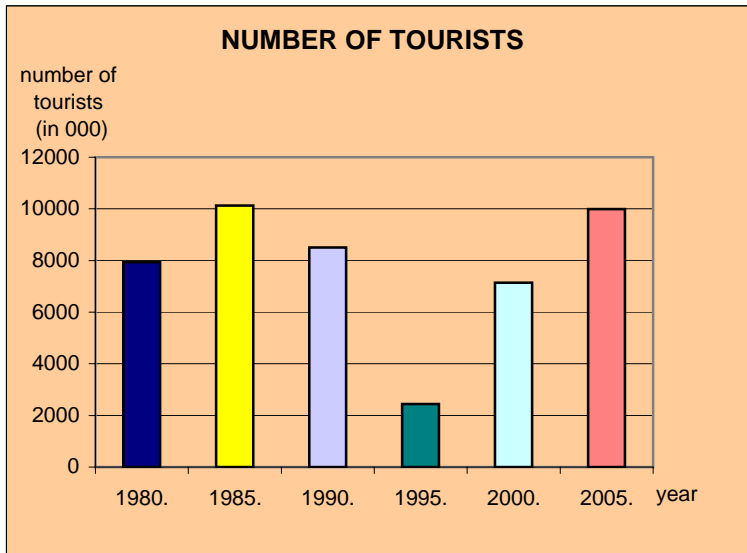
MAJOR CROATIAN ISLANDS			
	AREA	COASTLINE LENGTH	HIGHEST ALTITUDE
	SQ km	km	m
Krk	405,8	189,3	568
Cres	405,8	247,7	639
Brač	394,6	175,1	780
Hvar	299,7	254,2	628
Pag	284,6	269,2	349
Korčula	276,0	181,7	569
Dugi otok	114,4	170,7	337
Mljet	100,4	131,3	513
Vis	90,3	76,6	587
Rab	90,8	103,2	410
Lošinj	74,7	112,2	589

NATIONAL PARKS		
	AREA IN	ALTITUDE
	HECTARES	m
Brijuni	2.700	0 - 55
Krka	14.200	0 - 253
Kornati	30.200	0 - 236
Mljet	3.100	0 - 391
Paklenica	6.617	50 - 1,571
Plitvice lakes	19.479	380 - 1,280
Risnjak	3.014	680 - 1,528
Northern Velebit	10.900	518 - 1,676

II. CROATIAN TOURISM

1. BASIC INDICATORS OF TOURISM DEVELOPMENT

	1970	1980	1985	1990	1995	2000	2005
Number of beds (in 000)	616	692	820	863	609	710	909
Number of tourists (in 000)	6.454	7.929	10.125	8.498	2.438	7.136	9.995
Number of overnights (in 000)	42.411	53.600	67.665	52.523	12.885	39.183	51.421
Average number of overnights per bed	72	77	83	61	21	55	57
Average number of overnights per tourist arrival	6,6	6,8	6,7	6,2	5,3	5,5	5,1



2. ACCOMMODATION CAPACITIES

TYPE OF ACCOMMODATION 1980 - 2005 (AS OF AUGUST 31)

number of beds

	1975	1980	1985	1990	1995	2000	2005
Hotels	100.255	113.177	127.802	142.917	138.535	126.656	115.776
Tourist settlements	35.030	41.715	51.065	58.201	61.389	64.593	61.991
Camps	184.311	232.960	278.779	292.934	260.764	210.148	217.324
Private rooms	189.846	196.034	246.995	264.092	125.370	273.833	400.454
Health resorts	1.411	1.045	2.292	2.906	2.683	2.830	2.258
Workers resorts	65.982	68.228	76.061	69.319	6.996	11.657	11.124
Children and youth resorts	26.677	25.742	27.397	19.853	3.321	6.192	4.667
Others	12.559	13.099	9.860	12.458	9.568	14.279	95.616
TOTAL	616.071	692.000	820.251	862.680	608.626	710.188	909.210

TYPE OF ACCOMMODATION (POSITION AUGUST 31)

	NUMBER OF BEDS		INDEX	STRUCTURE (in %)	
	2004	2005	2005/04	2004	2005
Hotels and Apartment hotels	114.001	115.776	101,6	13,09	12,73
Tourist settlements	61.862	61.991	100,2	7,10	6,82
Camping sites	217.652	217.324	99,8	24,98	23,90
Private rooms	365.210	400.454	109,7	41,92	44,04
Spas	2.278	2.258	99,1	0,26	0,25
Vacation facilities	10.915	11.124	101,9	1,25	1,22
Youth hotels and hostels	3.954	4.667	118,0	0,45	0,51
Nautical ports	58.905	58.045	98,5	6,76	6,38
Other	25.502	27.305	107,1	2,93	3,00
Uncategorized accommodation	10.899	10.266	94,2	1,25	1,13
TOTAL	871.178	909.210	104,4	100,00	100,00

TOURIST LOCALITIES 1975 - 2005 (AS OF AUGUST 31)

number of beds

	1975	1980	1985	1990	1995	2000	2005
Sea coast	588.597	662.398	717.737	822.216	571.639	671.792	865.206
Health resorts	4.337	4.104	5.457	5.432	4.106	3.379	3.433
Mountains	5.775	7.713	9.440	8.656	6.183	5.789	7.972
Other tourist localities	3.904	3.930	3.932	5.022	3.727	3.054	3.848
Zagreb (Capital)	7.735	7.665	7.209	10.708	7.860	10.126	9.080
Non-tourist localities	5.723	6.190	6.476	10.646	15.748	16.048	19.671
TOTAL	616.071	692.000	820.251	862.680	609.263	710.188	909.210

TOURIST LOCALITIES

(AS OF AUGUST 31)

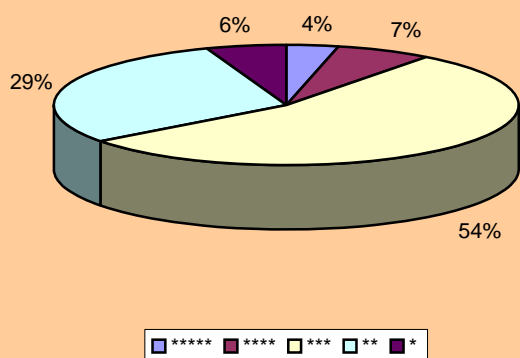
number of beds	2004	2005	INDEX 2005/04
Sea coast	829.708	865.206	104,3
Health resorts	3.494	3.433	98,3
Mountains	7.892	7.972	101,0
Other tourist localities	3.208	3.848	120,0
Zagreb (Capital)	8.927	9.080	101,7
Non-tourist localities	17.949	19.671	109,6
TOTAL	871.178	909.210	104,4

PER HOTEL CATEGORIES

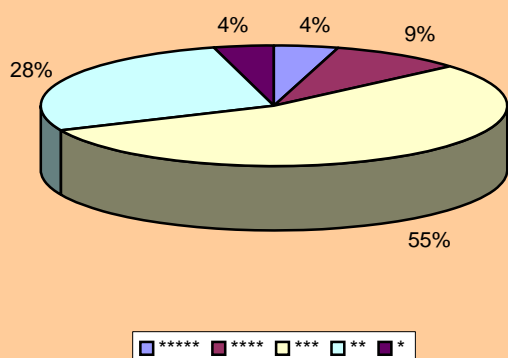
(AS OF AUGUST 31)

number of beds	2004	2005	2004u %	2005 u %	INDEX 2005/04
Hotels total	112.152	114.011	2809	2261	101,7
*****	3.992	5.042	100	100	126,3
****	7.459	10.341	187	205	138,6
***	61.157	62.453	1532	1239	102,1
**	33.355	31.465	836	624	94,3
*	6.189	4.710	155	93	76,1

NUMBER OF BEDS PER CATEGORIES 2004.



NUMBER OF BEDS PER CATEGORIES 2005.



COUNTIES

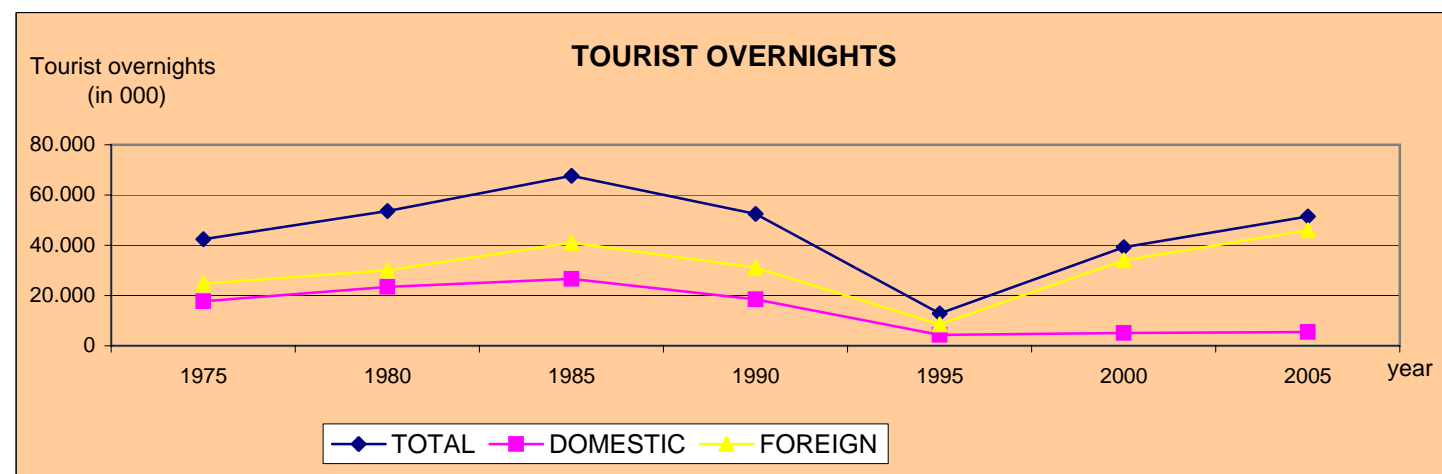
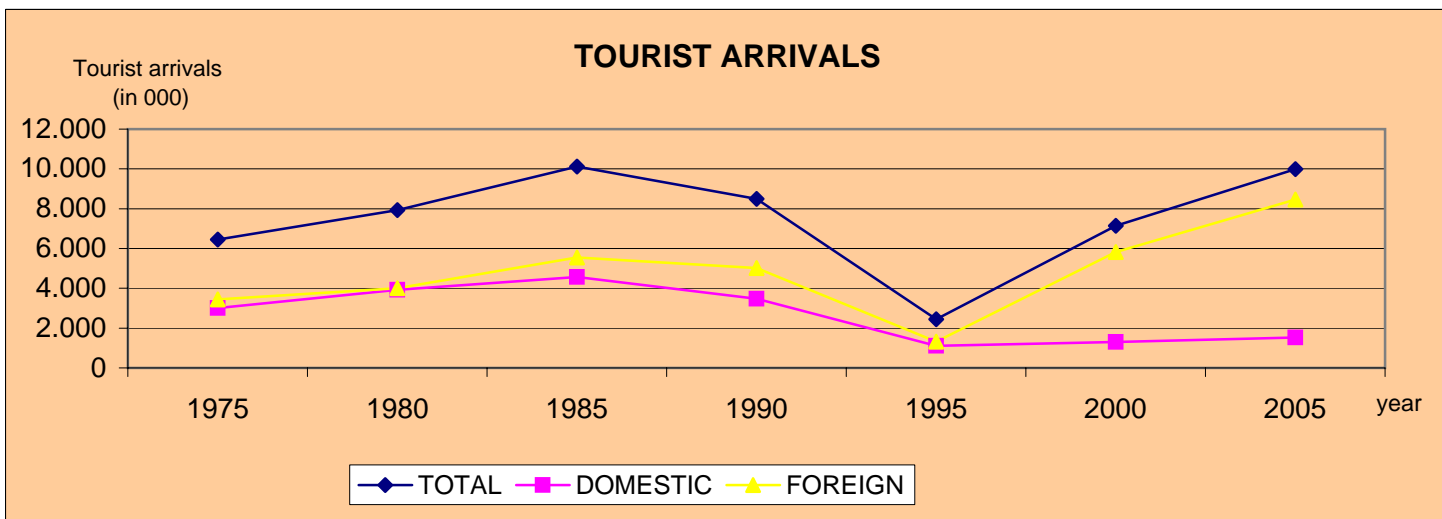
(AS OF AUGUST 31)

COUNTY OF	NUMBER OF BEDS		NUMBER OF BEDS IN HOTELS	
	2004	2005	2004	2005
Zagreb	835	862	253	401
Krapina - Zagorje	1.482	1.495	676	722
Sisak - Moslavina	731	701	270	286
Karlovac	5.326	5.384	436	443
Varaždin	1.868	1.807	607	608
Koprivnica - Križevci	431	449	343	382
Bjelovar - Bilogora	519	576	122	157
Primorje - Gorski Kotar	183.653	187.675	21.897	22.437
Lika - Senj	25.806	26.546	2.399	2.080
Virovitica - Podravina	250	253	62	62
Požega - Slavonija	171	162	20	20
Brod - Posavina	553	685	121	197
Zadar	112.162	123.555	6.547	6.585
Osijek - Baranja	1.424	1.841	886	1.159
Šibenik - Knin	70.882	74.188	7.735	7.720
Vukovar - Srijem	746	934	706	894
Split - Dalmatia	148.039	150.385	16.546	16.965
Istria	244.326	257.661	31.550	30.760
Dubrovnik - Neretva	61.784	63.322	16.113	16.483
Međimurje	386	766	257	257
City of Zagreb	9.804	9.963	4.606	5.393
TOTAL	871.178	909.210	112.152	114.011

3. Tourist traffic flow

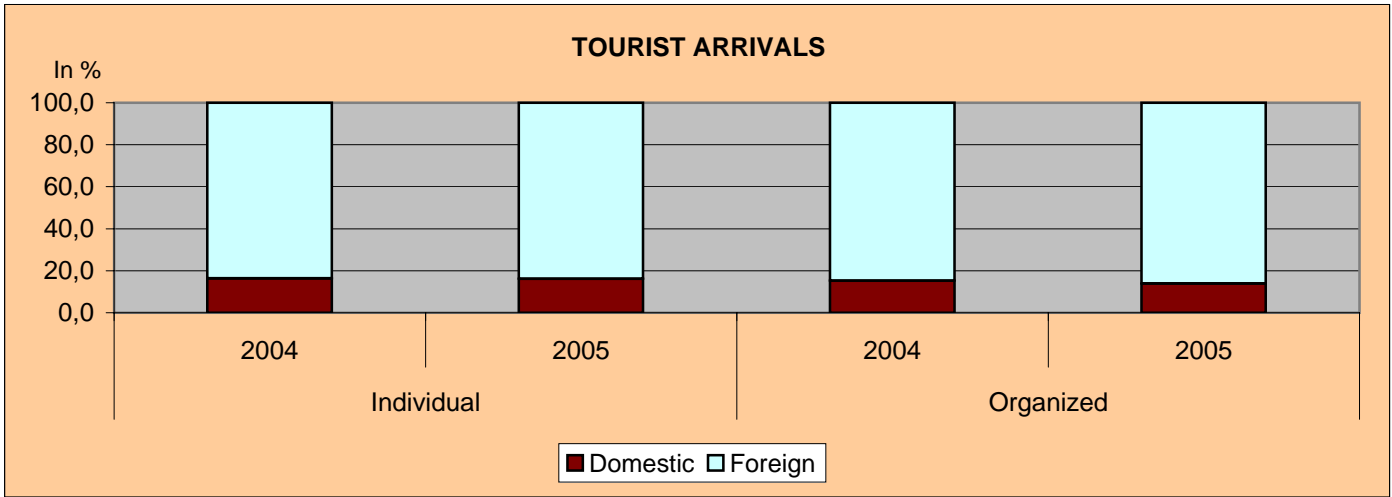
(in 000)	TOURIST ARRIVALS 1975 - 2005		
	TOTAL	DOMESTIC	FOREIGN
1975	6.454	3.009	3.445
1980	7.929	3.922	4.007
1985	10.125	4.569	5.556
1990	8.497	3.477	5.020
1995	2.438	1.113	1.324
2000	7.136	1.305	5.831
2005	9.995	1.528	8.467

(in 000)	TOURIST OVERNIGHTS 1975 - 2005		
	TOTAL	DOMESTIC	FOREIGN
1975	42.411	17.761	24.650
1980	53.600	23.475	30.125
1985	67.665	26.619	41.046
1990	52.523	18.474	31.049
1995	12.885	4.370	8.515
2000	39.183	5.138	34.045
2005	51.421	5.434	45.987



TOURIST ARRIVALS (in 000)

	Individual		Organized		Total	
	2004	2005	2004	2005	2004	2005
Domestic	1.001	1.025	499	503	1.500	1.528
Foreign	5.151	5.339	2.761	3.128	7.912	8.467
TOTAL	6.152	6.364	3.260	3.631	9.412	9.995

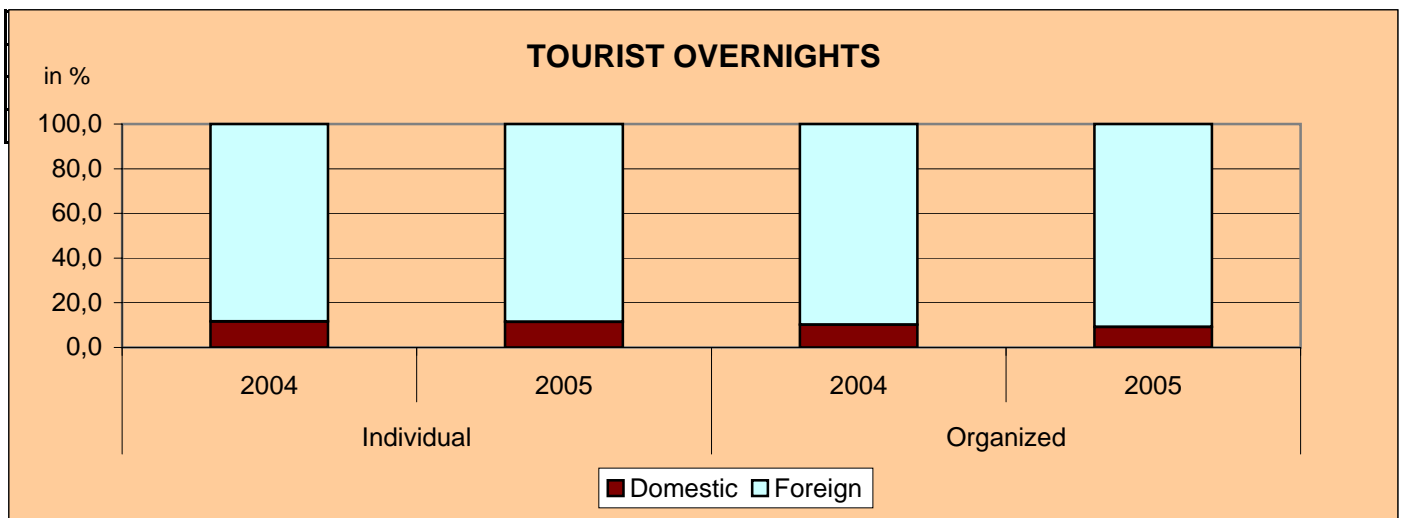


TOURIST OVERNIGHTS (in 000)

	Individual		Organized		Total	
	2004	2005	2004	2005	2004	2005
Domestic	3.312	3.524	1.969	1.910	5.281	5.434
Foreign	25.226	27.040	17.290	18.947	42.516	45.987
TOTAL	28.538	30.564	19.259	20.857	47.797	51.421

AVERAGE NUMBER OF OVERNIGHTS PER ARRIVAL

	2004	2005
Domestic	3,5	3,6
Foreign	5,4	5,4
TOTAL	5,1	5,1



4. Tourist traffic - per months

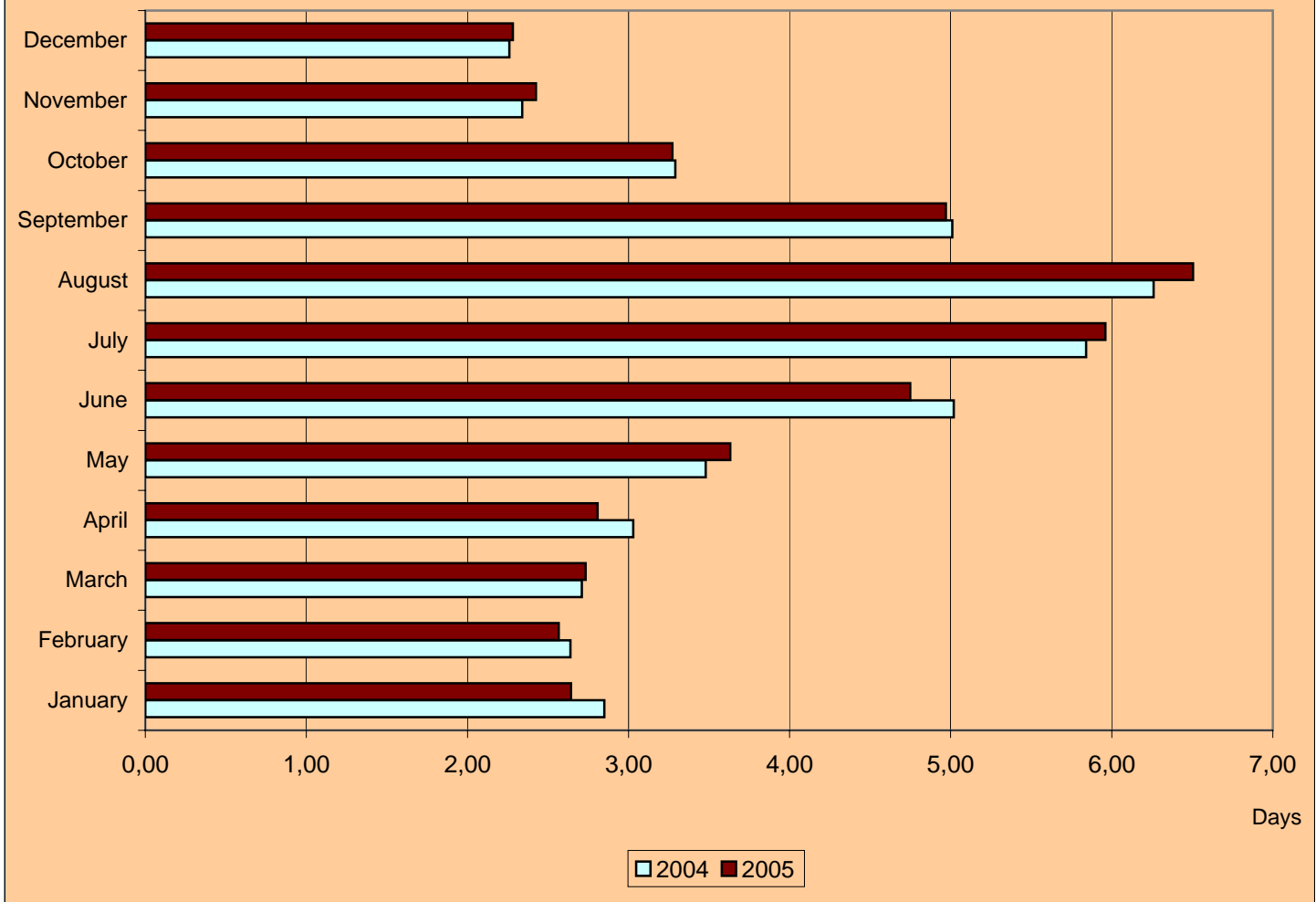
TOURIST ARRIVALS - PER MONTHS 2005						
	TOURIST ARRIVALS (in 000)			STRUCTURE (in %)		
	total	organized	individual	total	organized	individual
January	98	22	76	100,0	22,4	77,6
February	111	36	75	100,0	32,4	67,6
March	217	96	121	100,0	44,2	55,8
April	416	222	194	100,0	53,4	46,6
May	851	419	432	100,0	49,2	50,8
June	1.271	551	720	100,0	43,4	56,6
July	2.533	759	1.774	100,0	30,0	70,0
August	2.630	683	1.947	100,0	26,0	74,0
September	1.140	527	613	100,0	46,2	53,8
October	436	224	212	100,0	51,4	48,6
November	153	49	104	100,0	32,0	68,0
December	138	43	95	100,0	31,2	68,8

TOURIST OVERNIGHTS - PER MONTHS 2005						
	TOURIST OVERNIGHTS (in 000)			STRUCTURE (in %)		
	total	organized	individual	total	organized	individual
January	259	86	173	100,0	33,2	66,8
February	285	115	170	100,0	40,4	59,6
March	593	328	265	100,0	55,3	44,7
April	1.168	726	442	100,0	62,2	37,8
May	3.090	1.750	1.340	100,0	56,6	43,4
June	6.037	3.100	2.937	100,0	51,4	48,6
July	15.100	5.193	9.907	100,0	34,4	65,6
August	17.108	5.345	11.763	100,0	31,2	68,8
September	5.666	3.047	2.619	100,0	53,8	46,2
October	1.427	911	516	100,0	63,8	36,2
November	371	136	235	100,0	36,7	63,3
December	315	119	196	100,0	37,8	62,2

AVERAGE NUMBER OF OVERNIGHTS PER ARRIVAL

	2004	2005
January	2,85	2,64
February	2,64	2,57
March	2,71	2,73
April	3,03	2,81
May	3,48	3,63
June	5,02	4,75
July	5,84	5,96
August	6,26	6,50
September	5,01	4,97
October	3,29	3,27
November	2,34	2,42
December	2,26	2,28

AVERAGE NUMBER OF OVERNIGHTS PER ARRIVAL



5. Tourist traffic - tourist localities

(in 000) TOURIST ARRIVALS BY TYPE OF TOURIST LOCALITIES 1975 - 2005							
	1975	1980	1985	1990	1995	2000	2005
Sea coast	5.023	6.062	7.843	6.540	1.904	6.349	8.711
Health resorts	68	70	134	117	60	75	85
Mountains	174	226	359	263	13	128	270
Other tourist localities	290	319	362	249	59	75	139
Zagreb (Capital)	537	844	985	931	283	341	505
Non-tourist localities	362	408	442	397	120	169	285
TOTAL	6.454	7.929	10.125	8.497	2.438	7.137	9.995

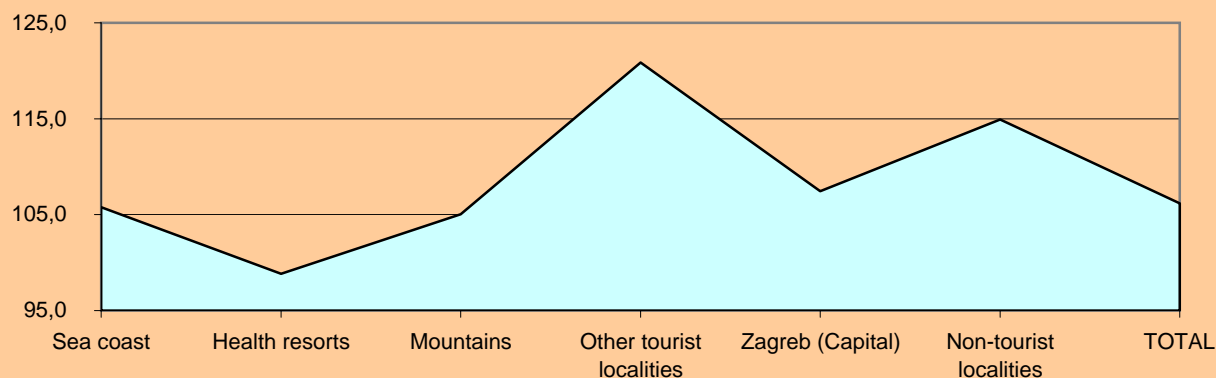
(in 000) TOURIST OVERNIGHTS BY TYPE OF TOURIST LOCALITIES 1975 - 2005							
	1975	1980	1985	1990	1995	2000	2005
Sea coast	39.591	50.009	62.985	48.560	11.443	37.393	48.776
Health resorts	573	641	1.092	937	194	299	352
Mountains	363	462	688	488	42	208	423
Other tourist localities	455	521	590	442	126	180	298
Zagreb (Capital)	880	1.223	1.387	1.328	652	599	871
Non-tourist localities	549	744	923	768	428	504	701
TOTAL	42.411	53.600	67.662	52.523	12.885	39.183	51.421

TOURIST ARRIVALS - TOURIST LOCALITIES

	TOURIST ARRIVALS (in 000)		INDEX	STRUCTURE (in %)	
	2004	2005	2005/04	2004	2005
Sea coast	8.236	8.711	105,8	87,5	87,2
Health resorts	86	85	98,8	0,9	0,9
Mountains	257	270	105,1	2,7	2,7
Other tourist localities	115	139	120,9	1,2	1,4
Zagreb (Capital)	470	505	107,4	5,0	5,1
Non-tourist localities	248	285	114,9	2,6	2,9
TOTAL	9.412	9.995	106,2	100,0	100,0

TOURIST ARRIVALS

Index 2005/2004

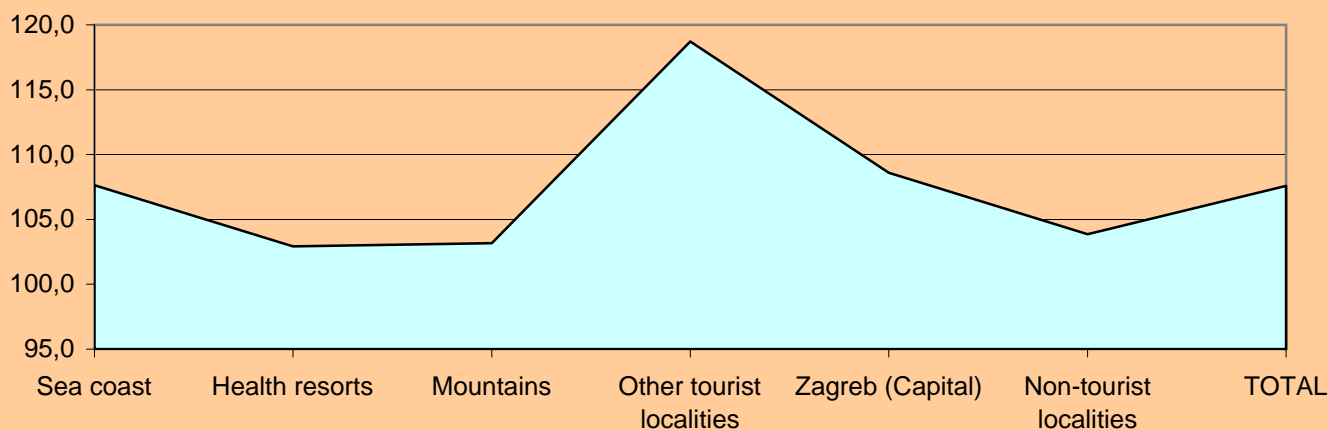


TOURIST OVERNIGHTS - TOURIST LOCALITIES

	TOURIST OVERNIGHTS (in 000)		INDEX	STRUCTURE (in %)	
	2004	2005	2005/04	2004	2005
Sea coast	45.317	48.776	107,6	94,8	94,9
Health resorts	342	352	102,9	0,7	0,7
Mountains	410	423	103,2	0,9	0,8
Other tourist localities	251	298	118,7	0,5	0,6
Zagreb (Capital)	802	871	108,6	1,7	1,7
Non-tourist localities	675	701	103,9	1,4	1,4
TOTAL	47.797	51.421	107,6	100,0	100,0

TOURIST OVERNIGHTS

Index 2005/2004



(in 000) TOURIST ARRIVALS - TOURIST LOCALITIES						
	FOREIGN		INDEX	DOMESTIC		INDEX
	2004	2005	2005/04	2004	2005	2005/04
Sea coast	7.185	7.651	106,5	1.051	1.060	100,9
Health resorts	16	17	106,3	70	67	95,7
Mountains	221	231	104,5	36	40	111,1
Other tourist localities	47	57	121,3	67	83	123,9
Zagreb (Capital)	311	353	113,5	158	152	96,2
Non-tourist localities	131	158	120,6	118	126	106,8
TOTAL	7.911	8.467	107,0	1.500	1.528	101,9

(in 000) TOURIST OVERNIGHTS - TOURIST LOCALITIES						
	FOREIGN		INDEX	DOMESTIC		INDEX
	2004	2005	2005/04	2004	2005	2005/04
Sea coast	41.110	44.456	108,1	4.208	4.320	102,7
Health resorts	59	61	103,4	282	291	103,2
Mountains	327	337	103,1	83	85	102,4
Other tourist localities	92	109	118,5	158	189	119,6
Zagreb (Capital)	544	616	113,2	259	255	98,5
Non-tourist localities	384	408	106,3	291	294	101,0
TOTAL	42.516	45.987	108,2	5.281	5.434	102,9

(in 000) AVERAGE NUMBER OF OVERNIGHTS PER TYPE OF TOURIST LOCALITIES				
	FOREIGN		DOMESTIC	
	2004	2005	2004	2005
Sea coast	5,7	5,8	4,0	4,1
Health resorts	3,7	3,6	4,0	4,3
Mountains	1,5	1,5	2,3	2,1
Other tourist localities	2,0	1,9	2,4	2,3
Zagreb (Capital)	1,7	1,7	1,6	1,7
Non-tourist localities	2,9	2,6	2,5	2,3
TOTAL	5,4	5,4	3,5	3,6

AVERAGE NUMBER OF OVERNIGHTS PER TYPE OF TOURIST LOCALITIES		
	2004	2005
Sea coast	5,5	5,6
Health resorts	4,0	4,1
Mountains	1,6	1,6
Other tourist localities	2,2	2,1
Zagreb (Capital)	1,7	1,7
Non-tourist localities	2,7	2,5
TOTAL	5,1	5,1

6. Tourist traffic - by type of accommodation

(U 000)	TOURIST OVERNIGHTS 1975 - 2005						
	1975	1980	1985	1990	1995	2000	2005
Hotels	14.350	17.521	20.975	20.716	5.587	13.164	14.960
Tourist settlements	3.313	3.937	5.466	5.198	1.972	4.561	4.703
Camps	7.816	12.804	17.150	12.010	3.429	10.740	13.359
Private rooms	8.531	10.406	13.383	7.375	840	8.325	13.859
Health resorts	327	327	593	617	162	253	203
Workers resorts	4.925	5.135	6.190	4.412	303	475	552
Children and youth resorts	2.044	1.975	2.106	1.245	192	340	334
Others	1.105	1.495	1.802	950	400	1.325	3.451
TOTAL	42.411	53.600	67.665	52.523	12.885	39.183	51.421

TOURIST ARRIVALS BY TYPE OF ACCOMMODATION

	TOURIST ARRIVALS (in 000)		INDEX 2005/04	STRUCTURE (in %)	
	2004	2005		2004	2005
	Hotels and Apartment hotels	3.324	3.700	111,3	35,3
Tourist settlements	671	666	99,3	7,1	6,7
Camps	1.968	1.970	100,1	20,9	19,7
Private rooms	1.757	1.982	112,8	18,7	19,8
Health resorts	21	22	104,8	0,2	0,2
Workers' resorts	85	88	103,5	0,9	0,9
Children and youth resorts	86	89	103,5	0,9	0,9
Nautical ports	783	773	98,7	8,3	7,7
Other	491	500	101,8	5,2	5,0
Uncategorized accommodation	226	205	90,7	2,4	2,1
TOTAL	9.412	9.995	106,2	100,0	100,0

TOURIST OVERNIGHTS BY TYPE OF ACCOMMODATION

	TOURIST OVERNIGHTS (in 000)		INDEX 2005/04	STRUCTURE (in %)	
	2004	2005		2004	2005
	Hotels and Apartment hotels	13.744	14.960	108,8	28,8
Tourist resorts	4.687	4.703	100,3	9,8	9,1
Camps	13.288	13.359	100,5	27,8	26,0
Private rooms	11.579	13.859	119,7	24,2	27,0
Health resorts	194	203	104,6	0,4	0,4
Workers' resorts	544	552	101,5	1,1	1,1
Children and youth resorts	339	334	98,5	0,7	0,6
Nautical ports	1.129	1.139	100,9	2,4	2,2
Other	1.469	1.527	103,9	3,1	3,0
Uncategorized accommodation	824	785	95,3	1,7	1,5
TOTAL	47.797	51.421	107,6	100,0	100,0

AVERAGE NUMBER OF TOURIST OVERNIGHTS

	PER ARRIVAL		PER BED	
	2004	2005	2004	2005
	Hotels and Apartment hotels	4,1	4,0	121
Tourist resorts	7,0	7,1	76	72
Camps	6,8	6,8	61	64
Private rooms	6,6	7,0	32	51
Health resorts	9,2	9,2	97	68
Workers' resorts	6,4	6,3	49	46
Children and youth resorts	3,9	3,8	85	56
Nautical ports	1,4	1,5	19	20
Other	3,0	3,1	57	11
Uncategorized accommodation	3,6	3,8	75	79
TOTAL	5,1	5,1	55	57

TOURIST ARRIVALS PER TYPE OF ACCOMMODATION (in 000)

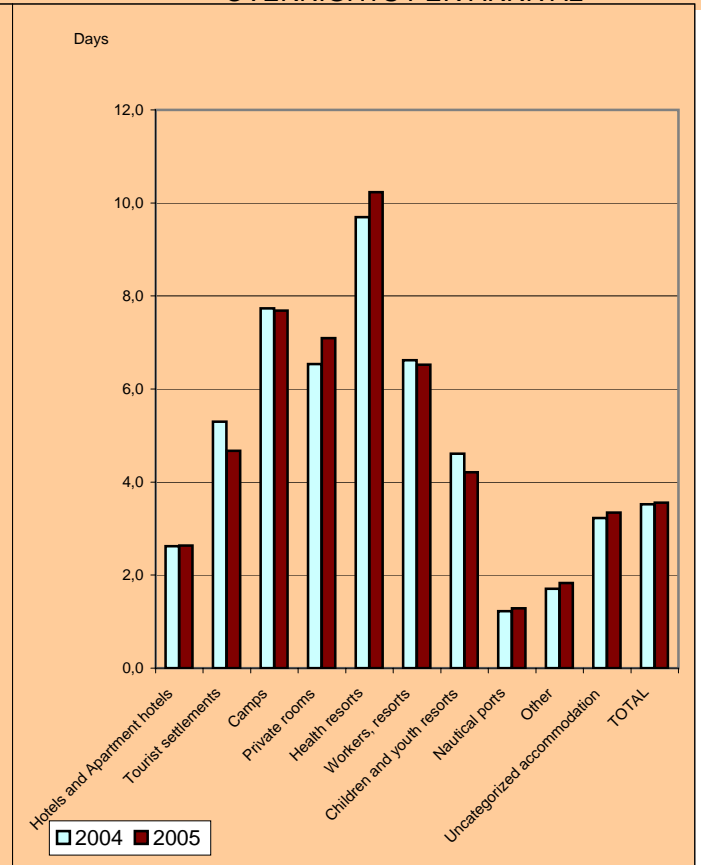
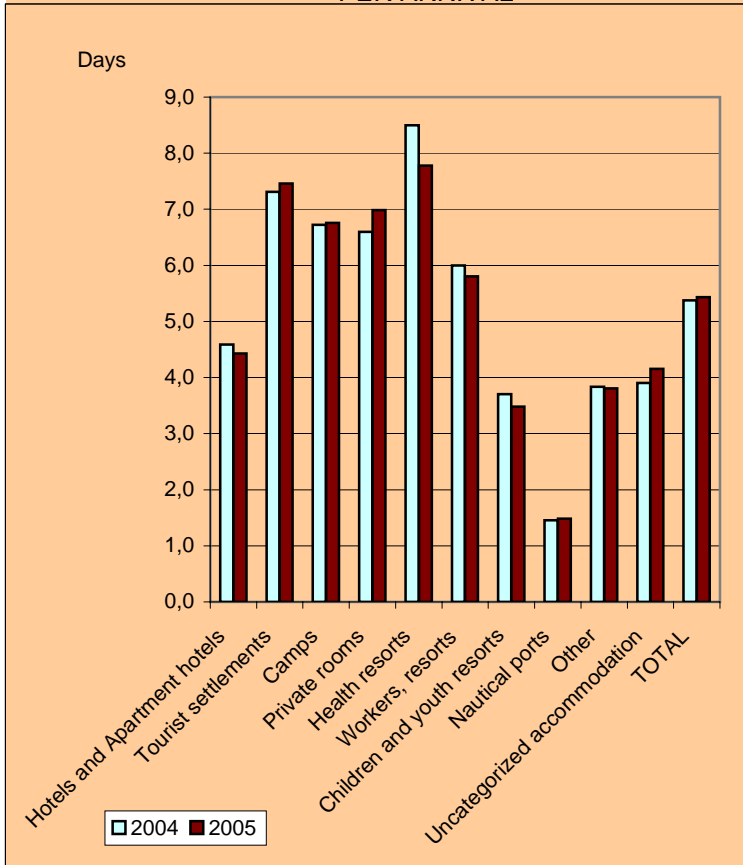
	FOREIGN		INDEX	DOMESTIC		INDEX
	2004	2005	2005/04	2004	2005	2005/04
Hotels and Apartment hotels	2.557	2.906	113,6	768	794	103,4
Tourist settlements	565	575	101,8	105	89	84,8
Camps	1.917	1.922	100,3	52	48	92,3
Private rooms	1.600	1.806	112,9	157	176	112,1
Health resorts	8	9	112,5	13	13	100,0
Workers' resorts	30	31	103,3	55	57	103,6
Children and youth resorts	57	62	108,8	28	28	100,0
Nautical ports	743	724	97,4	40	49	122,5
Other	297	309	104,0	194	192	99,0
Uncategorized accommodation	138	123	89,1	88	82	93,2
TOTAL	7.912	8.467	107,0	1.500	1.528	101,9

TOURIST OVERNIGHTS PER TYPE OF ACCOMMODATION (in 000)

	FOREIGN		INDEX	DOMESTIC		INDEX
	2004	2005	2005/04	2004	2005	2005/04
Hotels and Apartment hotels	11.731	12.870	109,7	2.014	2.090	103,8
Tourist settlements	4.130	4.288	103,8	556	416	74,8
Camps	12.885	12.990	100,8	402	369	91,8
Private rooms	10.553	12.611	119,5	1.026	1.248	121,6
Health resorts	68	70	102,9	126	133	105,6
Workers' resorts	180	180	100,0	364	372	102,2
Children and youth resorts	211	216	102,4	129	118	91,5
Nautical ports	1.080	1.075	99,5	49	63	128,6
Other	1.139	1.176	103,2	331	351	106,0
Uncategorized accommodation	539	511	94,8	284	274	96,5
TOTAL	42.516	45.987	108,2	5.281	5.434	102,9

AVERAGE NUMBER OF FOREIGN TOURIST OVERNIGHTS PER ARRIVAL

AVERAGE NUMBER OF DOMESTIC TOURIST OVERNIGHTS PER ARRIVAL



AVERAGE NUMBER OF TOURIST OVERNIGHTS PER ARRIVAL

	FOREIGN		DOMESTIC	
	2004	2005	2004	2005
Hotels and Apartment hotels	4,6	4,4	2,6	2,6
Tourist settlements	7,3	7,5	5,3	4,7
Camps	6,7	6,8	7,7	7,7
Private rooms	6,6	7,0	6,5	7,1
Health resorts	8,5	7,8	9,7	10,2
Workers' resorts	6,0	5,8	6,6	6,5
Children and youth resorts	3,7	3,5	4,6	4,2
Nautical ports	1,5	1,5	1,2	1,3
Other	3,8	3,8	1,7	1,8
Uncategorized accommodation	3,9	4,2	3,2	3,3
TOTAL	5,4	5,4	3,5	3,6

7. Tourist traffic according to country of origin

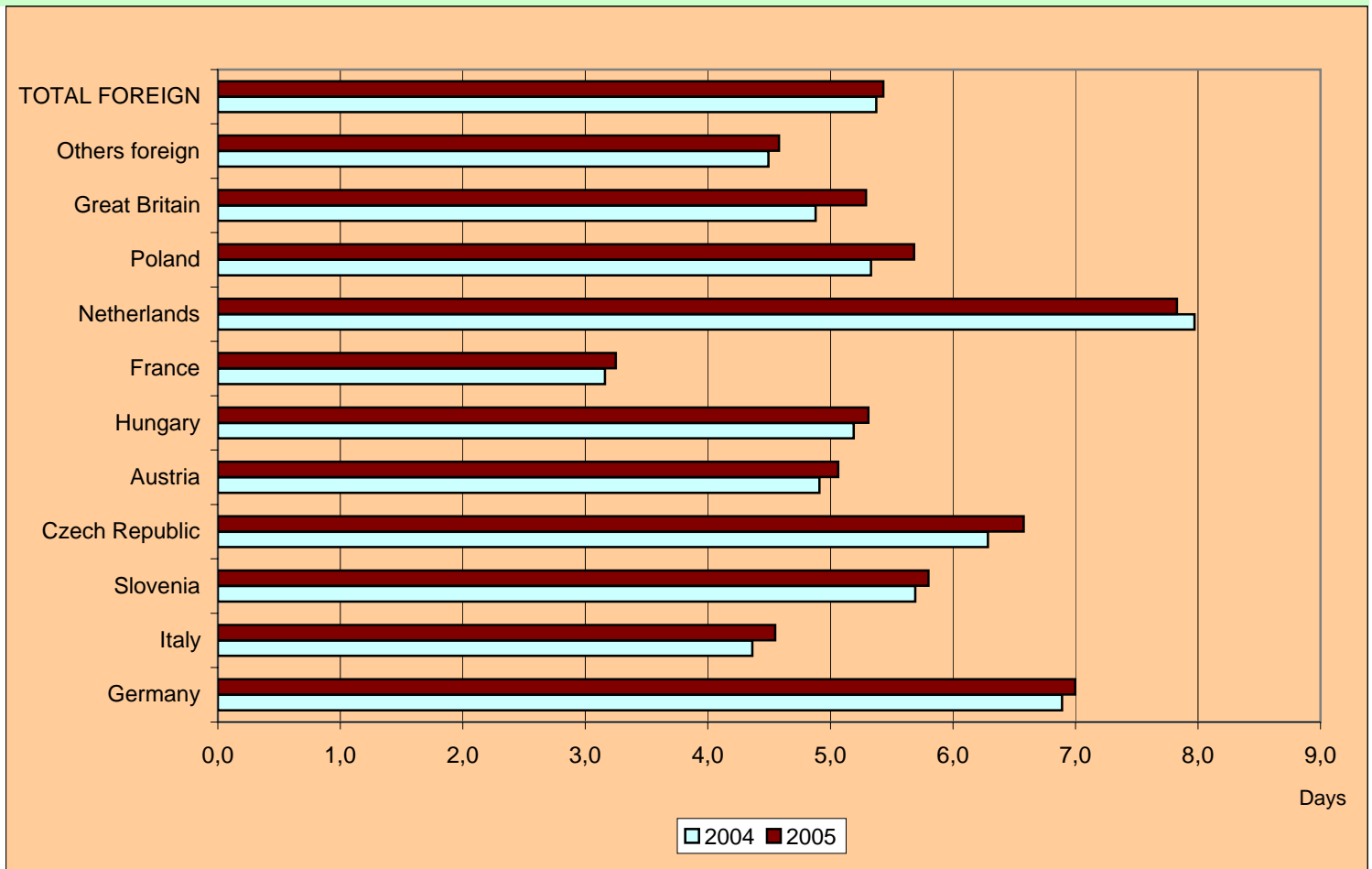
(in 000)		TOURIST OVERNIGHTS 1975 - 2005						
	1975	1980	1985	1990	1995	2000	2005	
Austria	3.307	3.533	4.718	2.975	1.255	3.358	3.756	
Czechoslovakia	1.404	1.654	3.054	1.525	-	-	-	
Czech Republic	-	-	-	-	889	4.734	4.052	
France	948	885	1.203	766	3	180	1.920	
Italy	2.032	2.163	4.215	5.365	798	4.526	5.699	
Hungary	363	618	674	517	217	1.418	2.405	
Netherlands	1.273	1.596	2.249	2.465	234	900	1.910	
Germany	10.446	14.333	16.544	11.944	1.915	7.804	11.001	
Great Britain	1.718	1.854	3.874	4.522	108	410	1.349	
Others	3.159	3.489	4.515	3.970	3.096	10.715	13.895	
Domestic	17.761	23.475	26.619	18.474	4.370	5.138	5.434	
TOTAL	42.411	53.600	67.665	52.523	12.885	39.183	51.421	

TOURIST ARRIVALS AND OVERNIGHTS BY COUNTRIES OF ORIGIN (in 000)						
	TOURIST ARRIVALS		INDEX	TOURIST OVERNIGHTS		INDEX
	2004	2005	2005/04	2004	2005	2005/04
Germany	1.580	1.572	99,5	10.888	11.001	101,0
Italy	1.232	1.253	101,7	5.375	5.699	106,0
Slovenia	884	879	99,4	5.032	5.099	101,3
Czech Republic	664	616	92,8	4.173	4.052	97,1
Austria	741	742	100,1	3.638	3.757	103,3
Hungary	403	453	112,4	2.092	2.405	115,0
France	393	591	150,4	1.242	1.920	154,6
Netherlands	212	244	115,1	1.690	1.910	113,0
Poland	241	242	100,4	1.285	1.375	107,0
Great Britain	208	255	122,6	1.015	1.349	132,9
Others foreign	1.354	1.620	119,6	6.086	7.420	121,9
TOTAL FOREIGN	7.912	8.467	107,0	42.516	45.987	108,2

AVERAGE NUMBER OF TOURIST OVERNIGHTS PER ARRIVAL		
	2004	2005
Germany	6,9	7,0
Italy	4,4	4,5
Slovenia	5,7	5,8
Czech Republic	6,3	6,6
Austria	4,9	5,1
Hungary	5,2	5,3
France	3,2	3,2
Netherlands	8,0	7,8
Poland	5,3	5,7
Great Britain	4,9	5,3
Others foreign	4,5	4,6
TOTAL FOREIGN	5,4	5,4

STRUCTURE OF FOREIGN TOURIST BY COUNTRIES (in %)				
	TOURIST ARRIVALS		TOURIST OVERNIGHTS	
	2004	2005	2004	2005
Germany	20,0	18,6	25,6	23,9
Italy	15,6	14,8	12,6	12,4
Slovenia	11,2	10,4	11,8	11,1
Czech Republic	8,4	7,3	9,8	8,8
Austria	9,4	8,8	8,6	8,2
Hungary	5,1	5,4	4,9	5,2
France	5,0	7,0	2,9	4,2
Netherlands	2,7	2,9	4,0	4,2
Poland	3,0	2,9	3,0	3,0
Great Britain	2,6	3,0	2,4	2,9
Others foreign	17,1	19,1	14,3	16,1
TOTAL FOREIGN	100,0	100,0	100,0	100,0

AVERAGE NUMBER OF TOURIST OVERNIGHTS PER ARRIVAL



8. Tourist traffic - by counties

TOURIST ARRIVALS BY COUNTIES

COUNTY OF	TOURIST ARRIVALS (in 000)		INDEX	STRUCTURE (in %)	
	2004	2005	2005/04	2004	2005
Zagreb	27	30	111,1	0,3	0,3
Krapina - Zagorje	39	36	92,3	0,4	0,4
Sisak - Moslavina	25	25	100,0	0,3	0,3
Karlovac	159	166	104,4	1,7	1,7
Varaždin	42	47	111,9	0,4	0,5
Koprivnica - Križevci	11	12	109,1	0,1	0,1
Bjelovar - Bilogora	10	11	110,0	0,1	0,1
Primorje - Gorski Kotar	2.025	2.076	102,5	21,5	20,8
Lika - Senj	279	300	107,5	3,0	3,0
Virovitica - Podravina	5	6	120,0	0,1	0,1
Požega - Slavonija	6	8	133,3	0,1	0,1
Brod - Posavina	17	18	105,9	0,2	0,2
Zadar	843	932	110,6	9,0	9,3
Osijek - Baranja	53	63	118,9	0,6	0,6
Šibenik - Knin	651	751	115,4	6,9	7,5
Vukovar - Srijem	25	31	124,0	0,3	0,3
Split - Dalmacija	1367	1505	110,1	14,5	15,1
Istra	2.515	2.505	99,6	26,7	25,1
Dubrovnik - Neretva	797	909	114,1	8,5	9,1
Međimurje	8	14	175,0	0,1	0,1
Grad Zagreb	508	550	108,3	5,4	5,5
TOTAL	9.412	9.995	106,2	100,0	100,0

TOURIST ARRIVALS BY COUNTIES 2005

COUNTY OF	TOURIST ARRIVALS (in 000)			
	DOMESTIC		FOREIGN	
	Organized	Individual	Organized	Individual
Zagreb	2	12	2	14
Krapina - Zagorje	10	19	2	6
Sisak - Moslavina	5	11	1	7
Karlovac	12	16	16	121
Varaždin	12	19	5	11
Koprivnica - Križevci	-	7	-	5
Bjelovar - Bilogora	-	8	-	3
Primorje - Gorski Kotar	126	230	596	1.124
Lika - Senj	11	27	94	168
Virovitica - Podravina	2	3	-	1
Požega - Slavonija	-	6	-	2
Brod - Posavina	-	9	-	8
Zadar	35	126	209	561
Osijek - Baranja	3	45	1	14
Šibenik - Knin	39	63	188	461
Vukovar - Srijem	1	21	-	9
Split - Dalmacija	72	134	561	739
Istra	104	63	954	1.385
Dubrovnik - Neretva	51	52	428	379
Međimurje	1	7	2	4
Grad Zagreb	17	147	69	317
TOTAL	503	1.025	3.128	5.339

TOURIST OVERNIGHTS BY COUNTIES

COUNTY OF	TOURIST OVERNIGHTS (in 000)		INDEX	STRUCTURE (in %)	
	2004	2005	2005/04	2004	2005
Zagreb	53	60	113,2	0,1	0,1
Krapina - Zagorje	114	113	99,1	0,2	0,2
Sisak - Moslavina	86	87	101,2	0,2	0,2
Karlovac	275	280	101,8	0,6	0,5
Varaždin	142	152	107,0	0,3	0,3
Koprivnica - Križevci	23	24	104,3	0,0	0,0
Bjelovar - Bilogora	23	26	113,0	0,0	0,1
Primorje - Gorski Kotar	10.147	10.502	103,5	21,2	20,4
Lika - Senj	1053	1120	106,4	2,2	2,2
Virovitica - Podravina	14	16	114,3	0,0	0,0
Požega - Slavonija	11	13	118,2	0,0	0,0
Brod - Posavina	34	34	100,0	0,1	0,1
Zadar	4.541	5.215	114,8	9,5	10,1
Osijek - Baranja	111	144	129,7	0,2	0,3
Šibenik - Knin	2755	3458	125,5	5,8	6,7
Vukovar - Srijem	44	55	125,0	0,1	0,1
Split - Dalmacija	7.018	8.029	114,4	14,7	15,6
Istra	16.533	16.650	100,7	34,6	32,4
Dubrovnik - Neretva	3.945	4.478	113,5	8,3	8,7
Međimurje	19	31	163,2	0,0	0,1
Grad Zagreb	856	934	109,1	1,8	1,8
TOTAL	47.797	51.421	107,6	100,0	100,0

TOURIST OVERNIGHTS BY COUNTIES 2005

COUNTY OF	TOURIST OVERNIGHTS (in 000)			
	DOMESTIC		FOREIGN	
	Organized	Individual	Organized	Individual
Zagreb	2	27	3	25
Krapina - Zagorje	22	73	5	13
Sisak - Moslavina	16	55	2	13
Karlovac	33	39	23	184
Varaždin	33	91	9	20
Koprivnica - Križevci	-	15	-	8
Bjelovar - Bilogora	-	18	-	7
Primorje - Gorski Kotar	534	741	3.399	5.827
Lika - Senj	27	99	272	722
Virovitica - Podravina	9	5	-	2
Požega - Slavonija	-	9	-	3
Brod - Posavina	1	21	-	12
Zadar	138	703	1.231	3.143
Osijek - Baranja	6	107	2	29
Šibenik - Knin	137	285	1.129	1.907
Vukovar - Srijem	2	40	1	13
Split - Dalmacija	301	504	3.500	3.724
Istra	434	252	6.796	9.167
Dubrovnik - Neretva	177	184	2.451	1.667
Međimurje	2	16	5	8
City of Zagreb	33	240	118	544
TOTAL	1.910	3.524	18.947	27.039

9. TOURIST TRAFFIC MUNICIPALITIES AND ISLANDS

MUNICIPALITIES WITH HIGHEST INTENSITY OF TOURIST TRAFFIC						
MUNICIPALITIES	tourist arrivals (in 000)		INDEX	tourist overnights (in 000)		INDEX
	2004	2005	2005/04	2004	2005	2005/04
Poreč	661	665	100,6	4.622	4.640	100,4
Rovinj	363	358	98,6	2.454	2.443	99,6
Dubrovnik	380	462	121,6	1.558	1.923	123,4
Vrsar	246	236	95,9	1.902	1.834	96,4
Umag	327	300	91,7	1.796	1.694	94,3
Mali Lošinj	249	253	101,6	1.628	1.665	102,3
Medulin	210	227	108,1	1.472	1.611	109,4
Rab	228	233	102,2	1.478	1.589	107,5
Crikvenica	220	220	100,0	1.145	1.152	100,6
Pula	212	224	105,7	1.022	1.103	107,9

TOURIST TRAFFIC REALIZED ON ISLANDS						
ISLANDS	tourist arrivals (in 000)		INDEX	tourist overnights (in 000)		INDEX
	2004	2005	2005/04	2004	2005	2005/04
Krk	432	460	106,5	2.463	2.556	103,8
Lošinj	249	253	101,6	1.628	1.664	102,2
Rab	228	233	102,2	1.478	1.589	107,5
Pag	162	171	105,6	1.060	1.237	116,7
Hvar	228	226	99,1	1.120	1.164	103,9
Brač	173	203	117,3	867	944	108,9
Korčula	146	155	106,2	649	704	108,5
Cres	111	112	100,9	698	690	98,9
Murter	163	166	101,8	614	684	111,4
Ugljan	15	29	193,3	124	237	191,1
Vis	23	27	117,4	145	185	127,6
Dugi Otok	40	44	110,0	124	163	131,5
Šolta	14	16	114,3	110	123	111,8
Pašman	16	17	106,3	89	108	121,3
Mljet	11	15	136,4	54	77	142,6

9. Nautical tourism

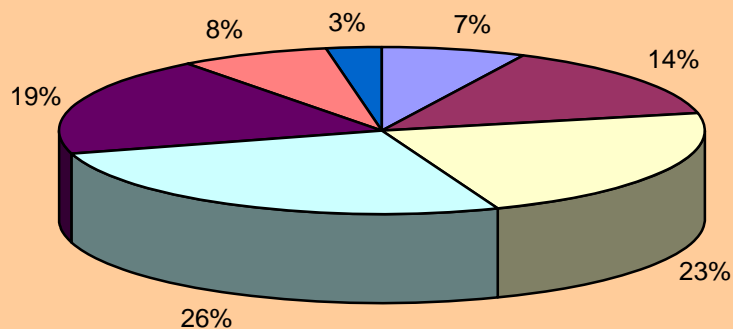
CAPACITY OF MARINAS

	2004	2005
Number of marinas	50	50
Nautical tourism harbours (anchorage, berths, dry marinas)	35	36
Area of aquatorium (sq. m)	3.673.004	3.901.705
Number of moors in the sea	15.407	15.058
Total length of coastline suitable for moorings (in meters)	113.302	121.172
Total surface area of marinas on land (sq. m) ²	1.028.806	1.121.971

NUMBER OF MOORS ACCORDING TO VESSEL LENGTHS

	NUMBER OF MOORS	STRUCTURE (in %)	NUMBER OF MOORS	STRUCTURE (in %)
	2004	2004	2005	2005
TOTAL	15.407	100,0	15.058	100,0
under 6 m	1.876	15,9	1.094	7,3
6 - 8 m	2.450	23,0	2.154	14,3
8 - 10 m	3.540	24,8	3.387	22,5
10 - 12 m	3.825	17,5	3.987	26,5
12 - 15 m	2.694	5,1	2.883	19,1
15 - 20 m	783	1,6	1.151	7,6
over 20 m	239	0,0	402	2,7

NUMBER OF MOORS ACCORDING TO VESSEL LENGTHS

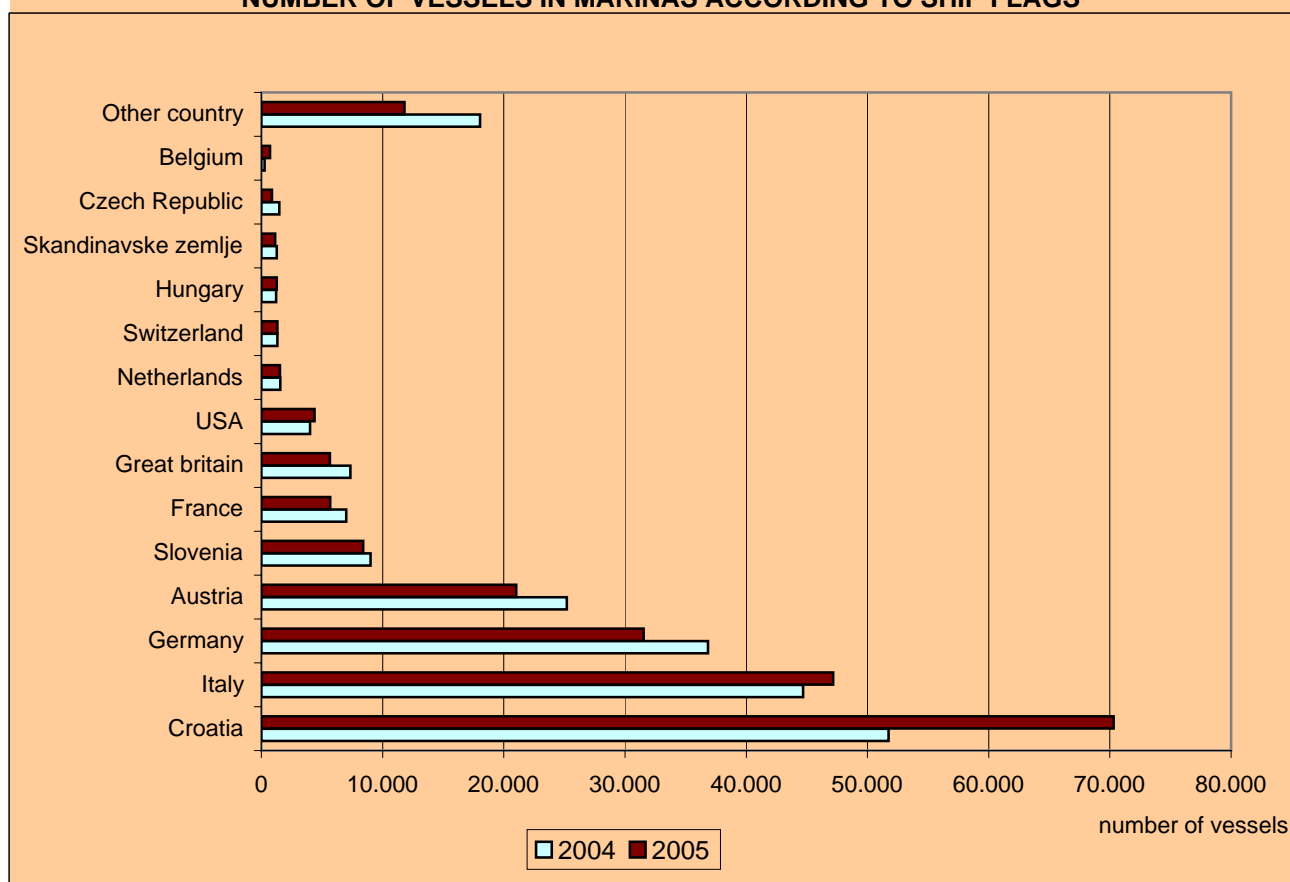


■ under 6 m
 ■ 6 - 8 m
 ■ 8 - 10 m
 ■ 10 - 12 m
 ■ 12 - 15 m
 ■ 15 - 20 m
 ■ over 20 m

NUMBER OF VESSELS IN MARINAS ACCORDING TO SHIP FLAGS

	NUMBER OF VESSELS		STRUCTURE (IN %)	
	2004	2005	2004	2005
TOTAL	210.971	212.784	100,0	100,0
Croatia	51.729	70.311	24,5	33,0
Italy	44.693	47.166	21,2	22,2
Germany	36.852	31.541	17,5	14,8
Austria	25.189	21.033	11,9	9,9
Slovenia	9.004	8.388	4,3	3,9
France	6.999	5.670	3,3	2,7
Great Britain	7.342	5.661	3,5	2,7
USA	4.016	4.377	1,9	2,1
Netherlands	1.560	1.534	0,7	0,7
Switzerland	1.321	1.310	0,6	0,6
Hungary	1.213	1.261	0,6	0,6
Skandinavske zemlje	1.280	1.138	0,6	0,5
Czech Republic	1.484	870	0,7	0,4
Belgium	253	723	0,1	0,3
Other country	18.036	11.801	8,5	5,5

NUMBER OF VESSELS IN MARINAS ACCORDING TO SHIP FLAGS



10. NAUTICAL TOURISM - FOREIGN VESSELS FOR LEISURE AND SPORT

1. NUMBER OF ISSUED LICENCES FOR COASTAL NAVIGATION IN THE REPUBLIC OF CROATIA

	2004	2005	INDEX 2005/2004
TOTAL	53.475	54.290	101,52
BY FLAG			
Austria	7.827	7.615	97,29
Belgja	502	601	119,72
Czech Republic	1.362	1.406	103,23
France	1.051	1.014	96,48
Greece	53	23	43,40
Italy	14.443	14.676	101,61
Israel	10	6	60,00
Hungary	705	859	121,84
Netherlands	1.001	1.077	107,59
Germany	17.376	17.423	100,27
Poland	181	263	145,30
Russian federation	12	11	91,67
USA	1.741	1.722	98,91
Slovakia	203	380	187,19
Scandinavian countries	186	205	110,22
Slovenia	4.274	4.726	110,58
Switzerland	298	301	101,01
Great Britain	918	985	107,30
Other countries	1.332	997	74,85
BY TYPE OF A VESSEL			
Motor yachts	11.355	3.030	26,68
Sailboats	10.111	2.744	27,14
Other vessels	32.009	48.516	151,57
BY A VESSEL LENGHT			
up to 6 m	26.482	28.497	107,61
6 - 8 m	9.341	8.702	93,16
8 - 10 m	5.846	5.702	97,54
10 - 12 m	5.999	5.752	95,88
12 - 15 m	4.173	3.965	95,02
15 - 20 m	1.102	1.138	103,27
over 20 m	532	534	100,38

2. NUMBER OF PERSONS ON BOARD
(BASED ON ISSUED LICENCES FOR COASTAL NAVIGATION IN THE Republic of Croatia)

	2004	2005	INDEX 2005/2004
TOTAL	170.167	297.600	174,89
By nationality			
Austria	27.700	45.032	162,57
Belgium	1.335	2.818	211,09
Czech Republic	4.845	9.681	199,81
France	2.700	4.598	170,30
Greece	118	118	100,00
Croatia	1.007	10.188	1011,72
Italy	47.132	71.621	151,96
Israel	84	405	482,14
Hungary	3.123	6.680	213,90
Netherlands	51.148	72.723	142,18
Germany	2.718	4.110	151,21
Poland	726	2.195	302,34
Russian federation	164	750	457,32
USA	2.397	2.291	95,58
Scandinavian countries	739	2.308	312,31
Slovakia	728	2.784	382,42
Slovenia	15.026	44.255	294,52
Switzerland	964	1.972	204,56
Great Britain	2.835	6.527	230,23
Other countries	4.678	6.544	139,89

11. Travel agencies and bureaux

TRAVEL AGENCIES AND BUREAUX (AS OF AUGUST 31), NUMBER OF OFFICES

	NUMBER OF UNITS FOR ORGANIZATION OF TOURIST TRAFFIC		
	Total	in Croatia	Abroad
2004	849	840	9
2005	862	850	12

TRAVELS OF DOMESTIC TOURISTS IN ORGANISATION OF TRAVEL AGENCIES IN 2005

	IN COUNTRY (in 000)	FOREIGN COUNTRIES	TOTAL
More than one day stay			
- tourist arrivals	258.425	201.056	459.481
- tourist overnights	1.207.923	906.330	2.114.253
One day stay	315.467	43.562	359.029

Travels of domestic tourists in organisation of travel agencies, by country of destination

COUNTRY OF DESTINATION	NUMBER OF TOURISTS		INDEX	NUMBER OF		INDEX
	2004	2005	2005/2004	2004	2005	2005/2004
TOTAL	492.600	459.481	93,28	2.454.656	2.114.253	86,13
CROATIA	295.456	258.425	87,47	1.494.433	1.207.923	80,83
FOREIGN COUNTRIES	197.144	201.056	101,98	960.223	906.330	94,39
Austria	31.806	32.676	102,74	132.042	139.575	105,71
Bosnia and Herzegovina	3.983	4.608	115,69	12.819	11.359	88,61
Czech Republic	22.805	20.524	90,00	101.065	82.236	81,37
France	13.978	12.760	91,29	82.137	59.134	71,99
Greece	8.801	11.577	131,54	48.616	67.732	139,32
Italy	35.071	37.636	107,31	201.955	160.817	79,63
Israel	569	424	74,52	1.465	1.815	123,89
Hungary	11.310	8.942	79,06	27.728	20.105	72,51
Malta	1.062	993	93,50	6.457	4.947	76,61
Netherland	3.530	2.692	76,26	14.503	10.477	72,24
Germany	8.485	7.243	85,36	30.747	18.433	59,95
Russian Federation	304	182	59,87	1.333	755	56,64
Scandinavian countries	2.191	1.957	89,32	12.628	9.600	76,02
Slovakia	3.217	4.471	138,98	13.254	15.413	116,29
Slovenia	16.331	17.073	104,54	71.034	78.934	111,12
Spain	9.369	12.250	130,75	51.262	63.879	124,61
Turkey	3.462	1.694	48,93	20.443	8.891	43,49
Great Britain	2.954	2.813	95,23	18.080	17.052	94,31
Other European countries	6.806	5.681	83,47	30.958	28.048	90,60
USA	1.534	1.596	104,04	12.503	7.541	60,31
Canada	225	426	189,33	1.353	3.092	228,53
Other non-European countries	9.351	12.838	137,29	67.841	96.495	142,24

**12. NON-COMMERCIAL TURNOVER OF TOURISTS IN APARTMENTS AND SUMMER HOUSES
(PERIOD 15 JUNE - 15 SEPTEMBER)**

	ARRIVALS		INDEX	OVERNIGHTS		INDEX
	2004	2005	2005/04	2004	2005	2005/04
TOTAL	236.541	233.367	98,7	1.263.890	1.320.839	104,5
DOMESTIC	100.977	111.153	110,1	285.984	343.001	119,9
FOREIGN	135.564	122.214	90,2	977.906	977.838	100,0

14. NUMBER OF CRUISES OF FOREIGN VESSELS IN THE REPUBLIC OF CROATIA

	2004	2005	Indeks 2005/04
Number of cruises	420	456	108,57
Number of sojourns	528	658	124,62
Number of passengers	440.254	511.417	116,16

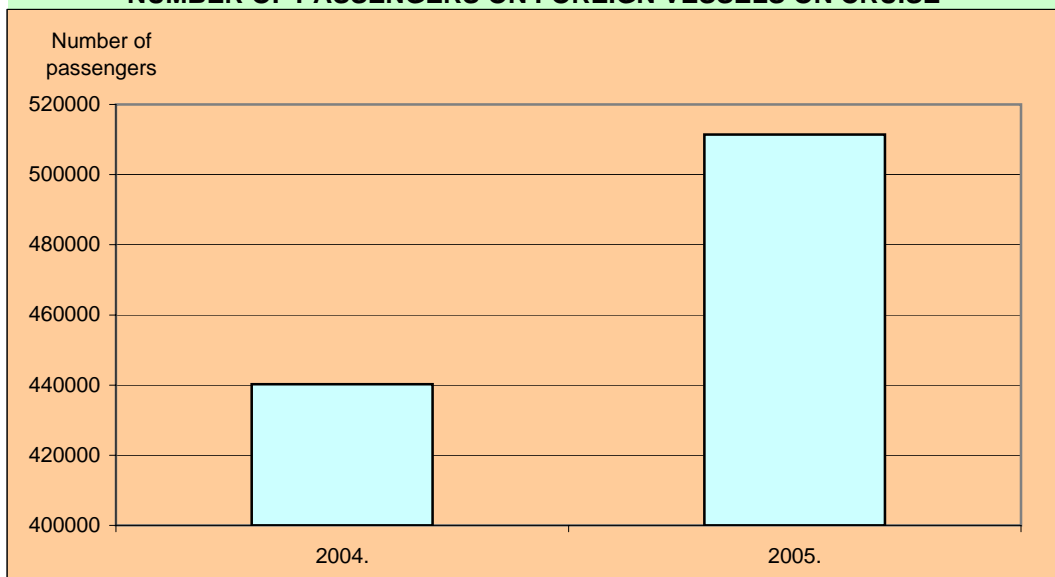
Number of cruises of foreign vessels in the Republic of Croatia, 2005 by flag of vessel

	NUMBER OF		
	CRUISES	PASSENGERS	SOUJOURNS
TOTAL	456	511.417	658
Bahams	99	84.556	119
Bermudas	7	15.737	7
Finland	2	907	2
France	1	198	4
Greece	6	1.416	10
Italy	17	1.954	51
Israel	26	975	108
Luxembourg	110	189.336	111
Malta	1	232	1
Marshall Islands	3	215	4
Mauritius	5	1.069	16
Netherlands	7	1.438	9
Norway	32	19.597	33
Germany	14	17.996	14
Panama	7	1.386	7
Portugal	3	1.080	7
Saint Vincent and Grenadini	66	129.244	66
Turkey	4	1.340	4
Ukraine	18	3.438	54
Great Britain	28	39.303	31

Number of cruises of foreign vessels in the Republic of Croatia, 2005 by Countyes

	NUMBER OF		
	CRUISES	PASSENGERS	SOUJOURNS
Primorje - Gorski Kotar	2	384	9
Šibenik-Knin	9	510	36
Zadar	7	1.581	7
Dubrovnik-Neretva	438	508.942	606

NUMBER OF PASSENGERS ON FOREIGN VESSELS ON CRUISE



13. BORDER CROSSING OF VEHICLES AND PASSENGERS IN 2005

BORDER CROSSING OF VEHICLES AND PASSENGERS IN 2005

(u 000)

	INFLOW			OUTFLOW		
	total	domestic	foreign	total	domestic	foreign
VEHICLES	20.475	6.793	13.682	20.043	6.789	13.254
cars	18.783	6.253	12.530	18.399	6.272	12.127
buses	250	82	168	246	82	164
others	1.442	458	984	1.398	435	963
PASSENGERS	66.904	21.405	45.499	65.790	21.257	44.533
Road cross-border traffic	63.802	20.892	42.910	62.702	20.747	41.955
Railway cross-border traffic	608	236	372	592	231	361
River cross-border traffic	14	0	14	10	0	10
Maritime cross-border traffic	971	37	934	960	39	921
Air cross-border traffic	1.509	240	1.269	1.526	240	1.286

15. VISITORS OF MAIN TOURIST SIGHTS AND ATTRACTIONS

VISITORS OF MAIN TOURIST SIGHTS AND ATTRACTIONS			
	2004	2005	INDEKS 2005/2004
Museum and Galleries	2.261.222	2.274.700	100,60
Pilgrim places	730.422	710.000	97,20
castles	70.427	74.202	105,36
Parks of nature	364.704	323.534	88,71
Memorial areas	2.219	2.129	95,94
Sports events	71.995	89.105	123,77
Other events	176.100	259.986	147,64
Old cities	722.920	886.185	122,58
Fairs	720.460	620.049	86,06
Carnivals	54.880	10.000	18,22
National parks	1.775.907	1.986.708	111,87
Aquariums	134.025	155.834	116,27
Casinos	271.151	390.688	144,09
Festivals	154.783	188.366	121,70
Archaeological sites	4.839	9.755	201,59
Forest parks	10.009	17.035	170,20
Protected landscapes	15.630	16.800	107,49
Monasteries	4.817	3.764	78,14
Zoological gardens	387.315	401.632	103,70
Cultural monuments	394.781	710.677	180,02
Arboretums	31.423	30.424	96,82
Famous people's birth houses	3.586	6.461	180,17
Other natural monuments	20.873	22.272	106,70
Special reserves	65.875	89.061	135,20
Fish-ponds	236	214	90,68
Other	95.265	92.120	96,70
TOTAL	8.545.864	9.371.701	109,66

16. ENTERPRISES/TRADE COMPANIES AND TRADESMEN ENGAGED IN HOTELS AND RESTAURANTS 2005

ENTERPRISES/TRADE COMPANIES AND TRADESMEN ENGAGED IN HOTELS AND RESTAURANTS 2005

	BUSINESS UNITS ¹⁾	INDEX 2005/04	PERSONS IN EMPLOYMENT ¹⁾	INDEX 2005/04	TURNOVER IN -000 KN	INDEX 2005/04
Hotels, villas and apartment hotels	477	106,2	19.496	103,5	4.891.071	113,3
Tourist settlements ²⁾	66	93,0	3.781	102,4	830.330	108,5
Apartment resorts ³⁾	48	137,1	234	92,5	77.641	96,9
Motels	22	71,0	290	74,2	45.065	84,2
Pensions	58	118,4	305	101,7	34.666	93,3
Guest house	4	-	55	-	6.566	-
Camping sites	163	97,6	2.255	97,3	872.719	103,5
Overnight accommodations	35	100,0	246	107,9	31.939	105,7
Spas	8	114,3	451	121,2	61.175	157,0
Youth hotels and hostels	25	96,2	275	107,8	46.319	113,5
Inns	385	103,8	1.836	101,3	211.800	103,5
facilitis ⁴⁾	470	87,4	3.199	94,3	416.880	97,5
Restaurants	1.512	101,3	9.604	105,6	1.358.929	112,4
Pizzarias	513	109,9	2.563	109,4	302.383	111,6
Bistros	926	90,8	2.965	92,0	356.249	102,8
Pastry shops	365	98,1	1.165	110,3	88.313	105,8
Fast food	512	88,7	1.536	87,9	270.075	102,2
Cafes	6.984	95,3	16.973	96,0	1.897.028	99,7
Beer halls	61	46,2	270	70,7	34.980	86,8
Buffets	1.034	95,7	2.759	105,6	280.517	95,9
Canteens	181	88,7	1.308	80,0	224.219	86,0
Catering	59	115,7	416	158,2	76.712	125,6
Other ⁵⁾	1.741	93,5	5.306	86,5	611.128	97,4
Main offices	-	-	5.340	97,9	-	-
TOTAL	15.649	95,60	82.628	98,95	13.026.704	106,80

1) Situation as on 31 August

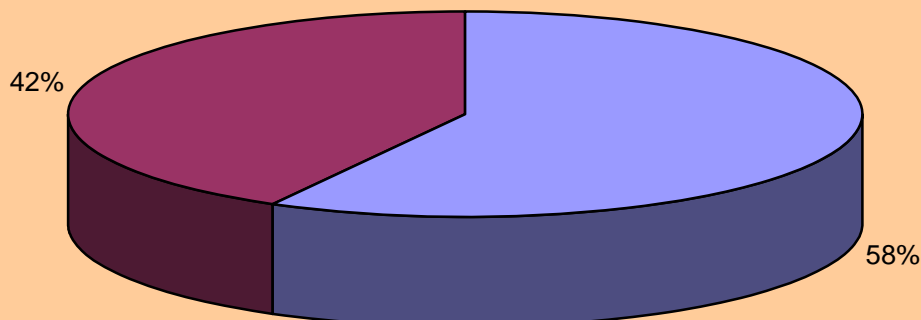
2) Hotel resorts, hotel and apartment resorts and tourist resorts

3) Tourist apartments and apartments

4) Suite, Studio type suites, summer houses, rooms to let, vacation facilities, mountain lodges, hunting lodges, temporary accommodation capacities, vessel cabins, sleeping cars and couchettes, rural households and uncategorised facilities

5) Milk-bars, snack-bars, grills, coffee-rooms, night clubs, night bars, discotequers, disco-bars, taverns, wine cellars, vineyard cottages, canteens and other hotel and restaurant units

HOSPITALITY ENTERPRISES/TRADE COMPANIES AND TRADESMEN TURNOVER BY TYPES OF FACILITIES IN 2005



■ Total accommodation facilities ■ Total catering facilities

17. NUMBER OF PERSONS EMPLOYED IN HOTELS AND RESTAURANTS

NUMBER OF PERSONS EMPLOYED IN HOTELS AND RESTAURANTS						
Year	HOTELS AND RESTAURANTS (in -000)			Hotels and restaurants ployees structure of number of employed persons (in %)		
	Total	Persons in paid employm ent in legal entities	In crafts and trades and free lances	Total	Persons in paid employm ent in legal entities	In crafts and trades and free lances
2000.	74	41	34	6,0	3,9	16,4
2001.	76	41	35	6,0	3,9	16,4
2002.	77	40	38	6,0	3,8	16,4
2003.	78	39	39	5,9	3,6	16,1
2004.	81	41	40	6,0	3,7	15,9
2005.	80	40	40	5,9	3,6	15,5

15. TRAVEL RELATED REVENUES

	2004	2005 (Preliminary data)	Index 2005/ 2004
GDP (in mil. EUR)	27.379	30.950	113,00
Revenues(in mil. EUR)*	5.505,6	5.998,9	108,96
Share of tourism in overall economy in %	20,1	19,4	

* SOURCE: Craotian National Bank

SOURCE: Central Bureau of Statistics

NOTE ON METHODOLOGY: For statistical purposes, a tourist is considered to be any one, regardless of age or gender, who spends at least one night in some form of lodging other than his or her peomanet abode. Day excursionists are not considered as tourists.

Prepared by: Biserka Avdić, Department for Tourism Policy and Travel Market
biserka.avdic@mmtpr.hr